

Care Management PCMH Committee

Person-Centered Medical Home
Program Update
February 2, 2022



PCMH Program Status

As of January 31, 2022

PCMH Program Participants		Sites		Providers	
12/31/21	1/31/22	12/31/21	1/31/22	12/31/21	1/31/22
124	124	575	577	2,412	2,419
93 PCMH Approved Practices NCQA Sustained Recognition		20 Glide Path Practices Working Towards NCQA Recognition		0 Glide Path Renewal Practices Working towards NCQA Renewal Recognition	
				16 PCMH Accredited Practices Includes FQHCs	

Note: 6 Practices have sites in both PCMH & Glide Path Programs

PCMH Approved Practices

PCMH Approved Practices

12/31/21

95

1/31/22

93

New Approved Practices: 0

Completed Glide Path: 0

Termed Practices: 2

PCMH Approved Sites

12/31/21

363

1/31/22

366

New Approved Sites: 2

Completed Glide Path: 3

Sites Termed: 2

PCMH Approved Providers

12/31/21

1,700

1/31/22

1,711

Completed Glide Path: 9

Providers Added: 6

Providers Termed: 4

PCMH Adult & Pediatric Practices

93 PCMH Approved
Practices

366
PCMH Approved Sites

36 Internal
Medicine
PCMH
Practices
with **172** Sites

20 Family
Medicine
PCMH
Practices
with **93** Sites

52 Pediatric
PCMH
Practices
with **100** Sites

1 Geriatric
PCMH
Practice
with **1** Site

This data reflects current information through January 31, 2022

*Note: 6 Practices have sites in 3 of the 4 categories & 4 Practices have sites in 2 of the 4 categories.
Sites are counted once.*

PCMH Glide Path Practices

Glide Path Practices

12/31/21

19

1/31/22

20

New Practices: 2

Completed Glide Path: 1

Practices Termed: 0

0

Glide Path Renewal Practice

No Change

Glide Path Sites

12/31/21

69

1/31/22

68

New Practice Sites: 2

Completed Glide Path: 3

Sites Termed: 0

Glide Path Providers

12/31/21

148

1/31/22

143

New Providers: 4

Completed Glide Path: 9

Providers Added: 0

Providers Termed: 0

0 Sites

0 Providers

No Change

PCMH Accredited Program Participants

Federally Qualified Health Centers (FQHCs) and FQHC look-alikes are program participants*

PCMH Accredited Participants

12/31/21

16

1/31/22

16

No Change

PCMH Accredited Sites

12/31/21

143

1/31/22

143

Sites Added: 0

Sites Terminated: 0

PCMH Accredited Providers

12/31/21

564

1/31/22

565

Providers Added: 15

Providers Terminated: 14

*Federally Qualified Health Centers (FQHCs) and FQHC look-alikes are PCMH program participants if they are pursuing and/or have obtained the Joint Commission Ambulatory Care accreditation with Primary Care Medical Home certification as well as NCQA recognition.



PCMH CY2022 Program Recruitment

Recruitment as of January 31, 2022

- **4 Practice Sites**
 - 2 New Practice Sites
 - 2 New Sites from Current PCMH Practices
- **7 Providers**
 - 4 From New Practice Sites
 - 3 From New Sites from Current PCMH Practices

Practice Recruitment Opportunities

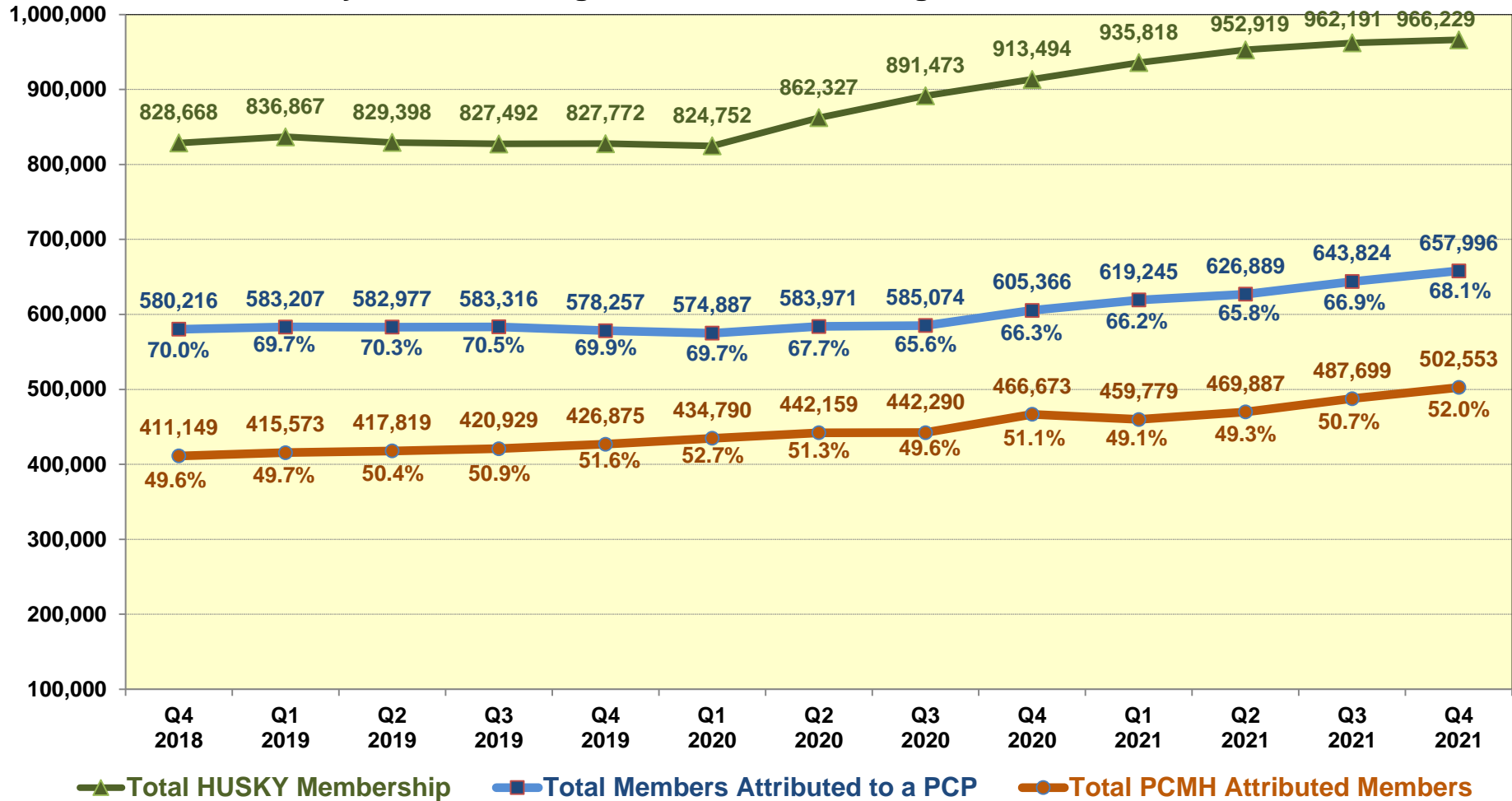
16 Practice Sites

46 Providers

These are eligible primary care practices that are most likely to enroll in the PCMH program in 2022.

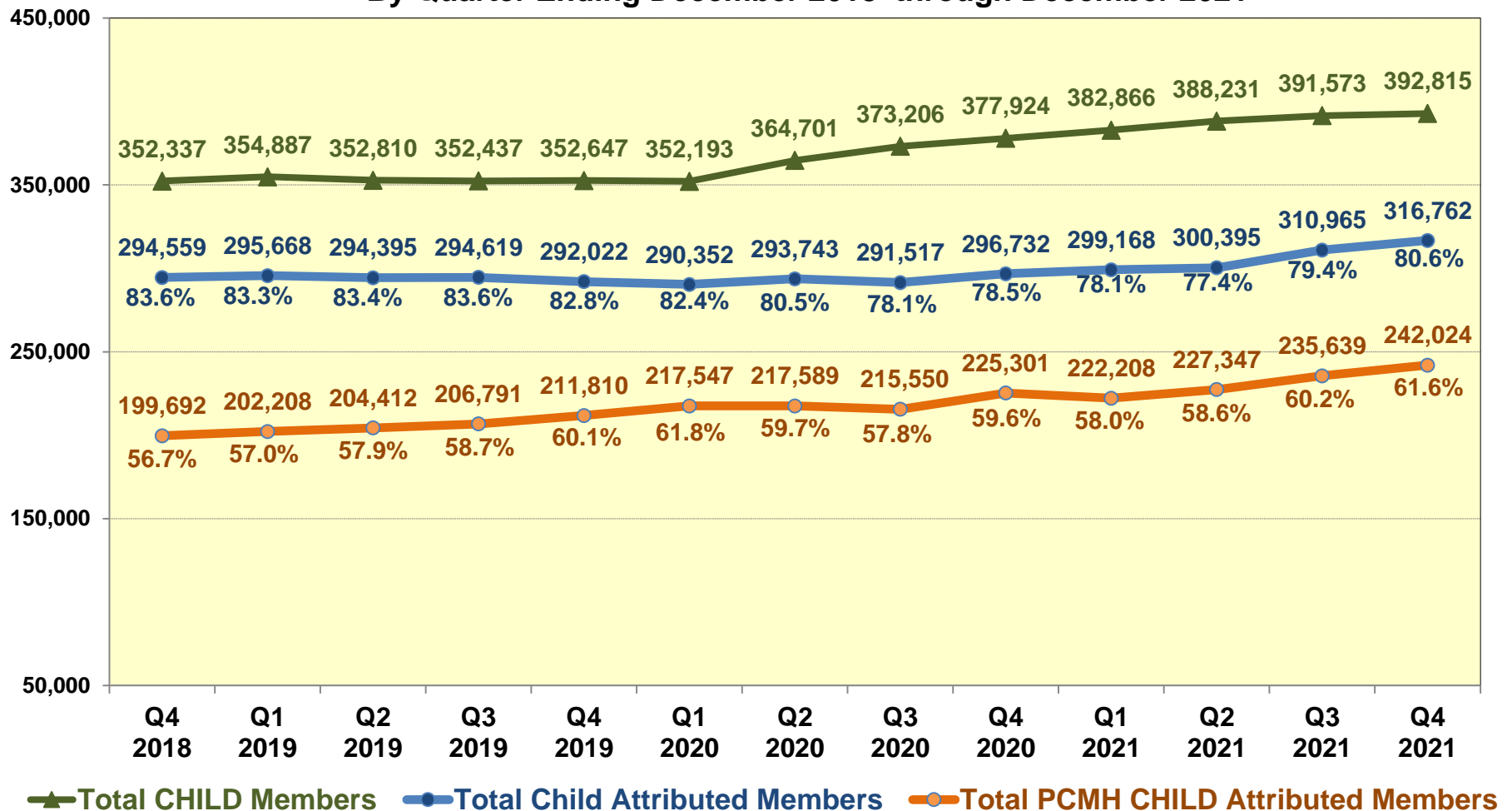
PCMH Program Member Attribution

Summary of Total HUSKY Membership, Total Members Attributed to a PCP
and Total PCMH Attributed Members
By Quarter Ending December 2018 through December 2021



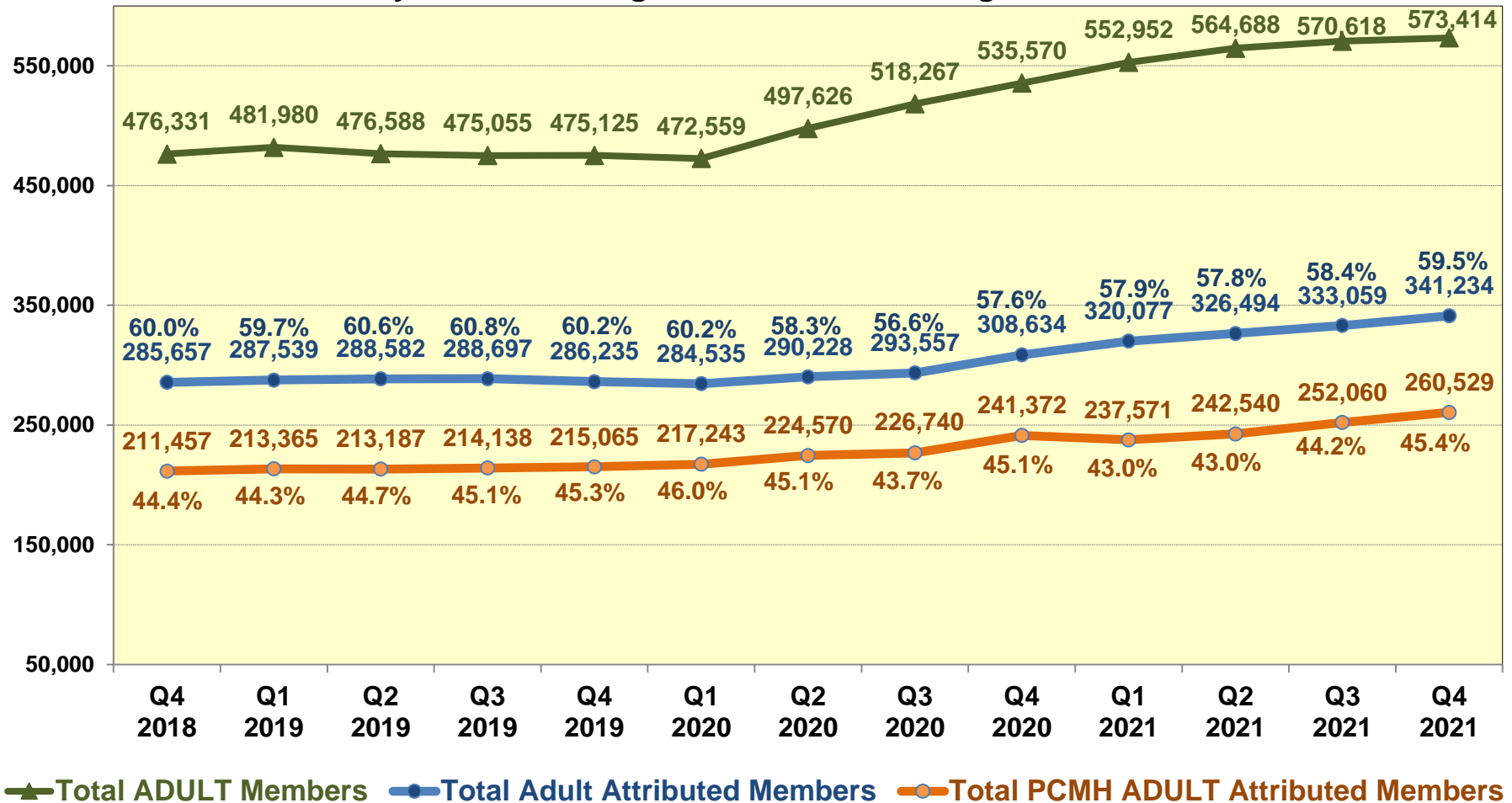
PCMH Program CHILD Member Attribution

Comparison of Total CHILD Members, Total CHILD Attributed Members,
and Total PCMH CHILD Attributed Members
By Quarter Ending December 2018 through December 2021

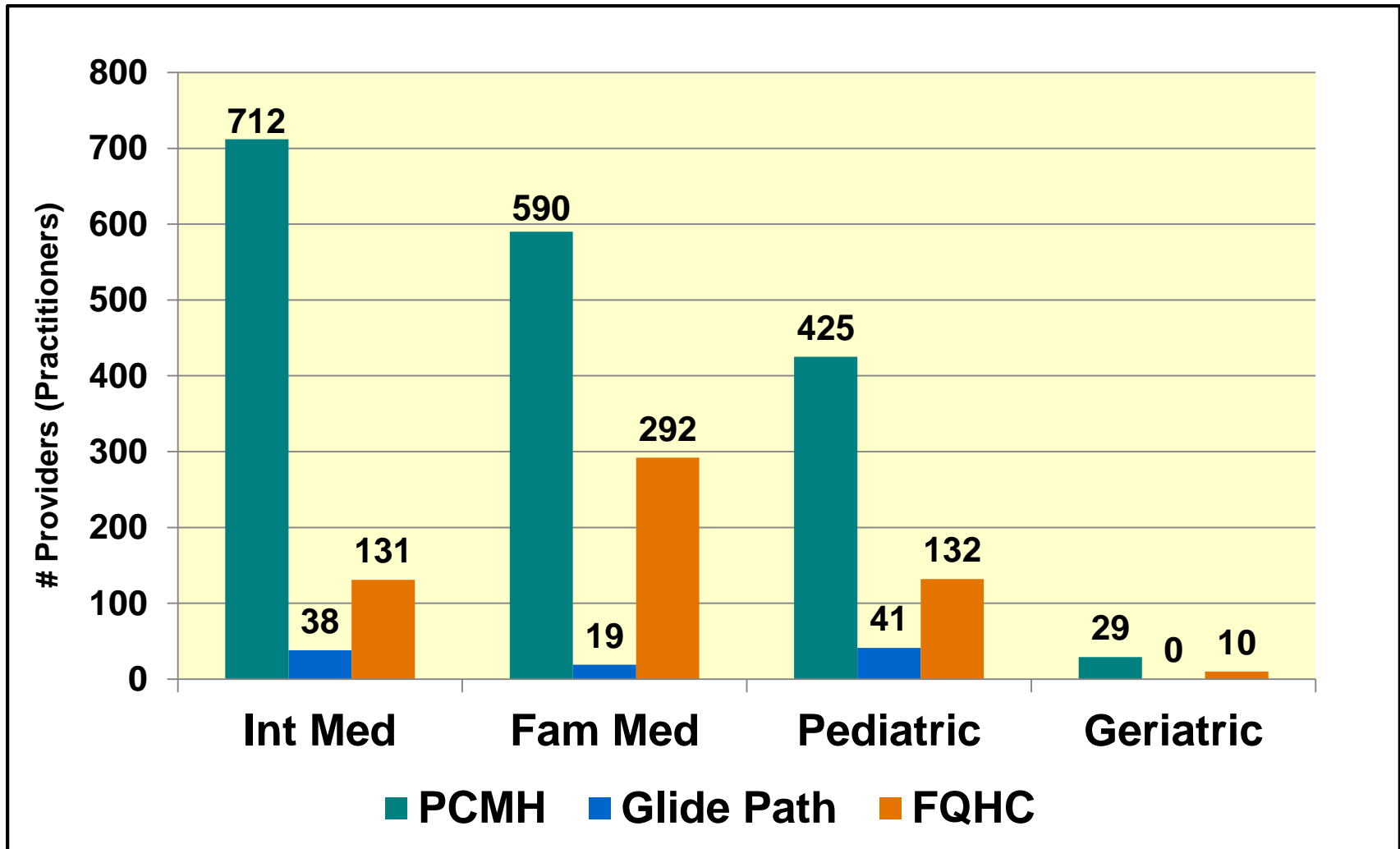


PCMH Program ADULT Member Attribution

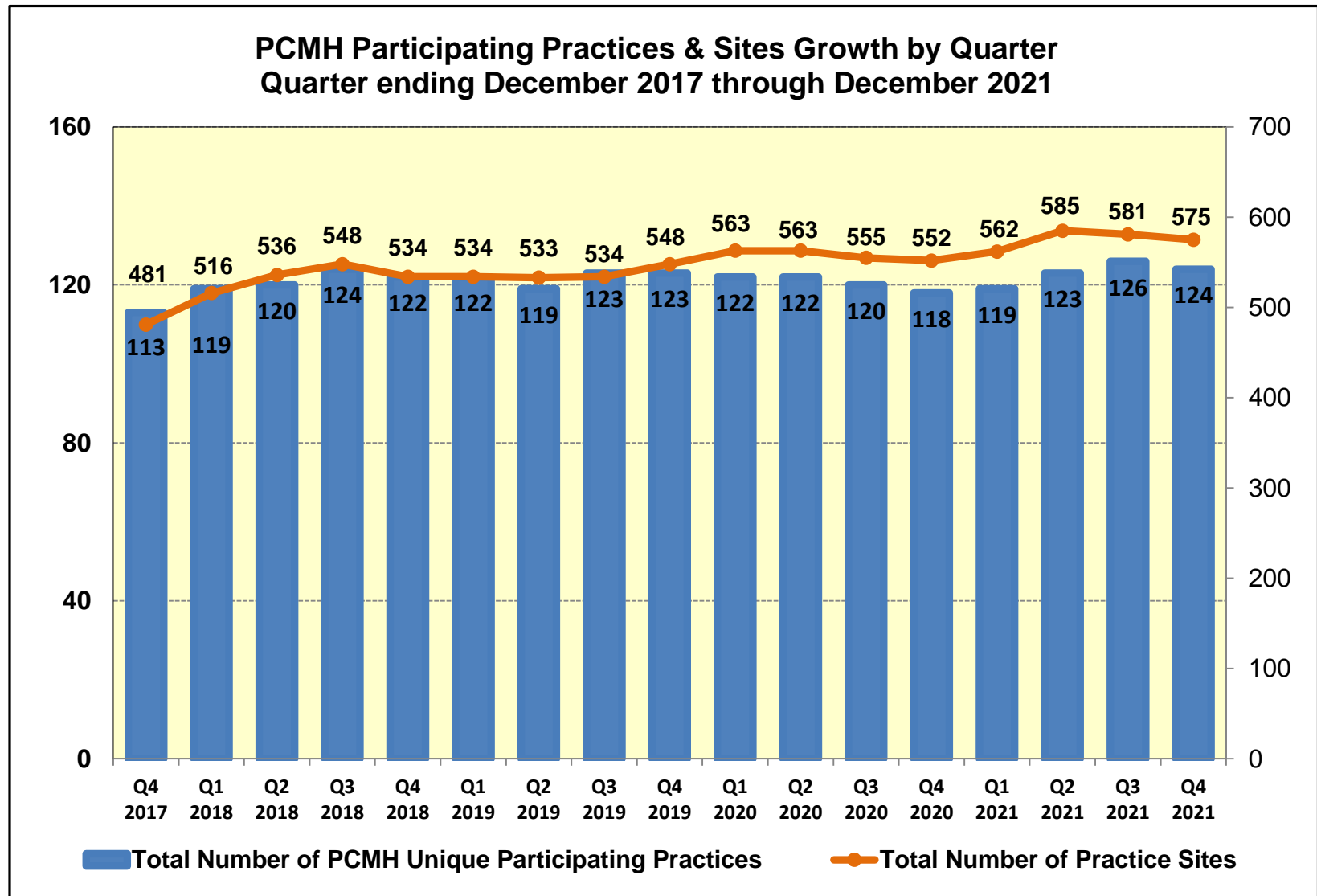
Comparison of Total ADULT Members, Total ADULT Attributed Members,
and Total PCMH ADULT Attributed Members
By Quarter Ending December 2018 through December 2021



Provider Specialty by PCMH Program Participation as of January 31, 2022

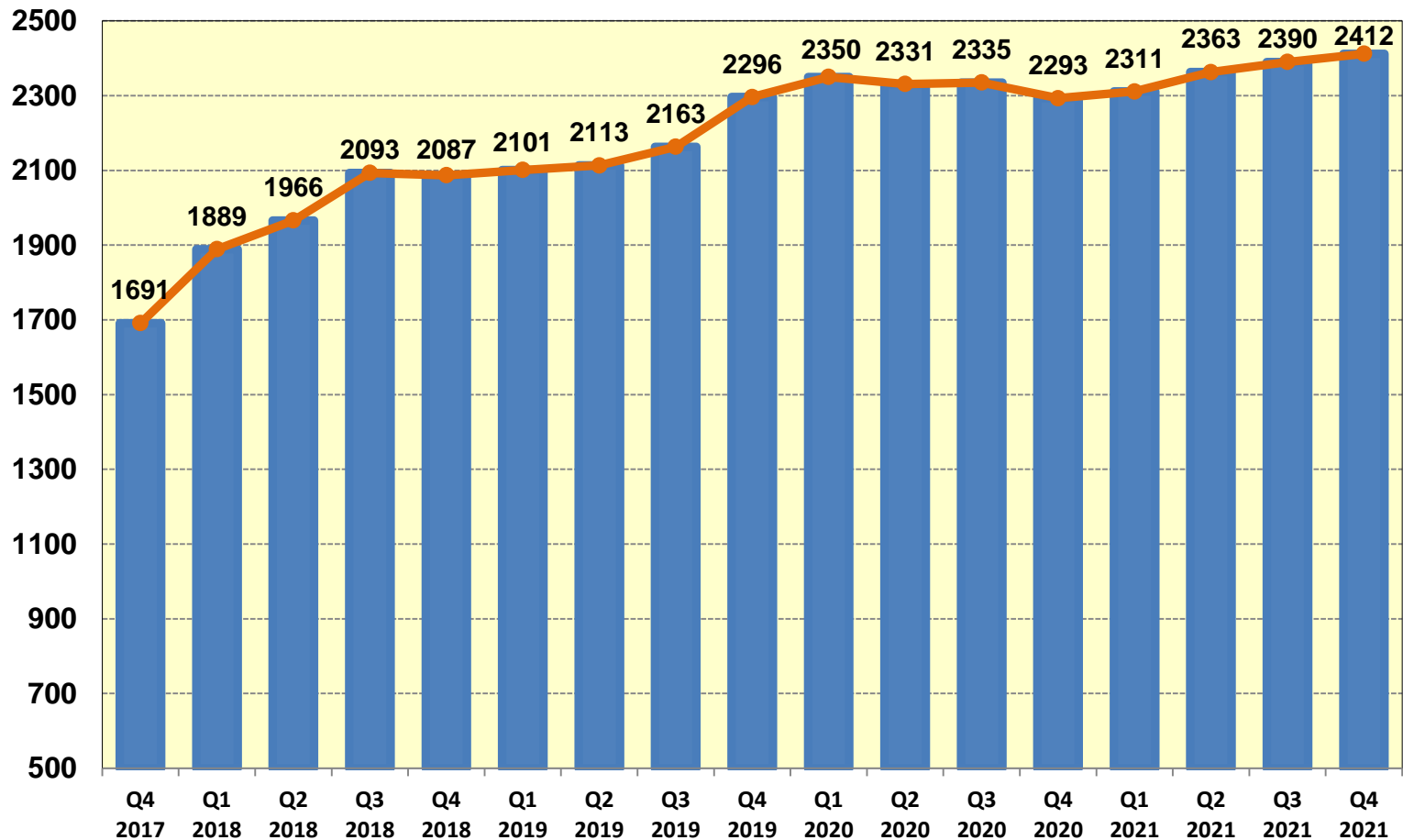


PCMH Program Growth-Practices & Sites



PCMH Program Growth - Providers

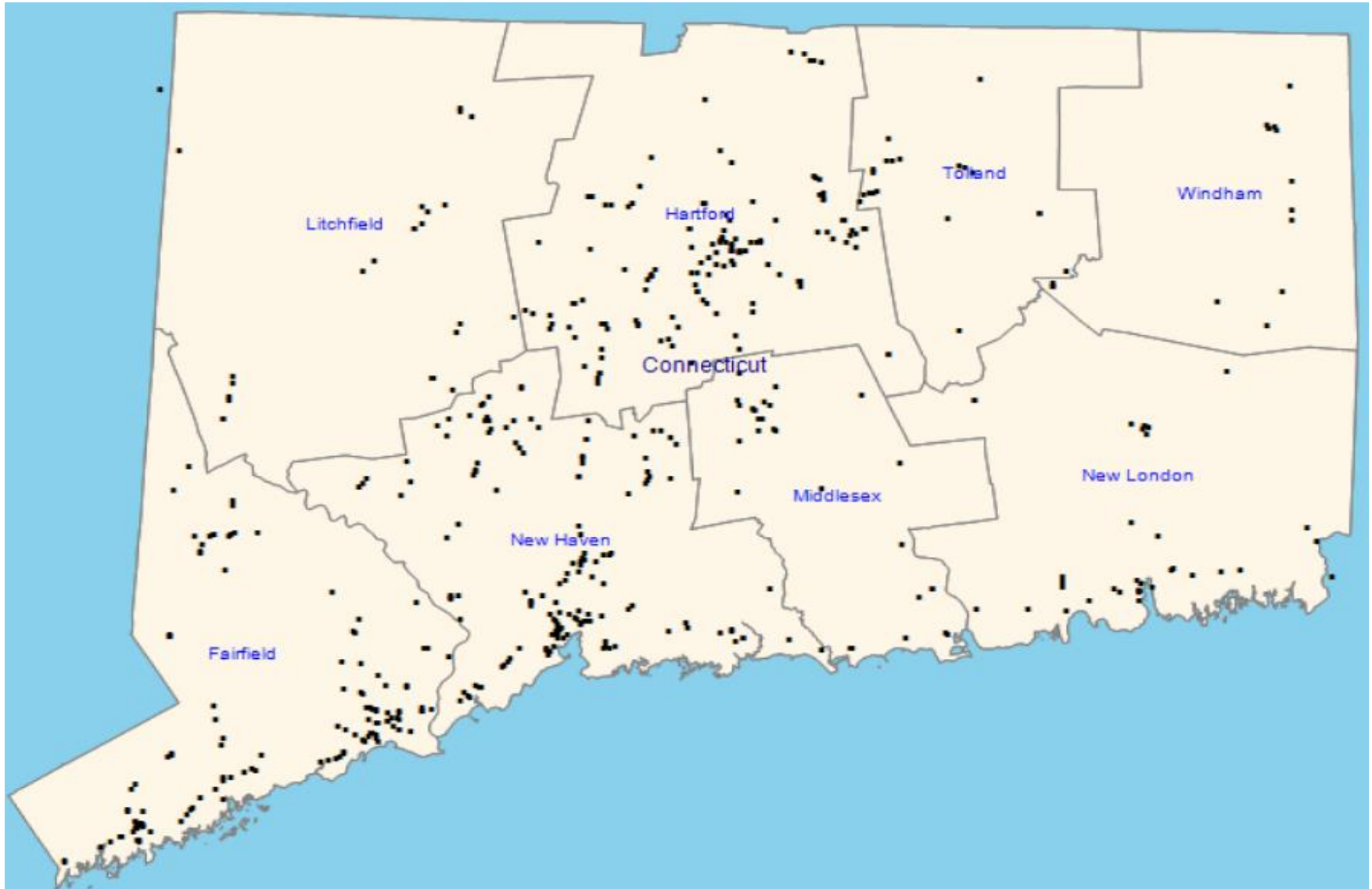
PCMH Total Participating Providers/Practitioners by Quarter
Quarter ending December 2017 through December 2021





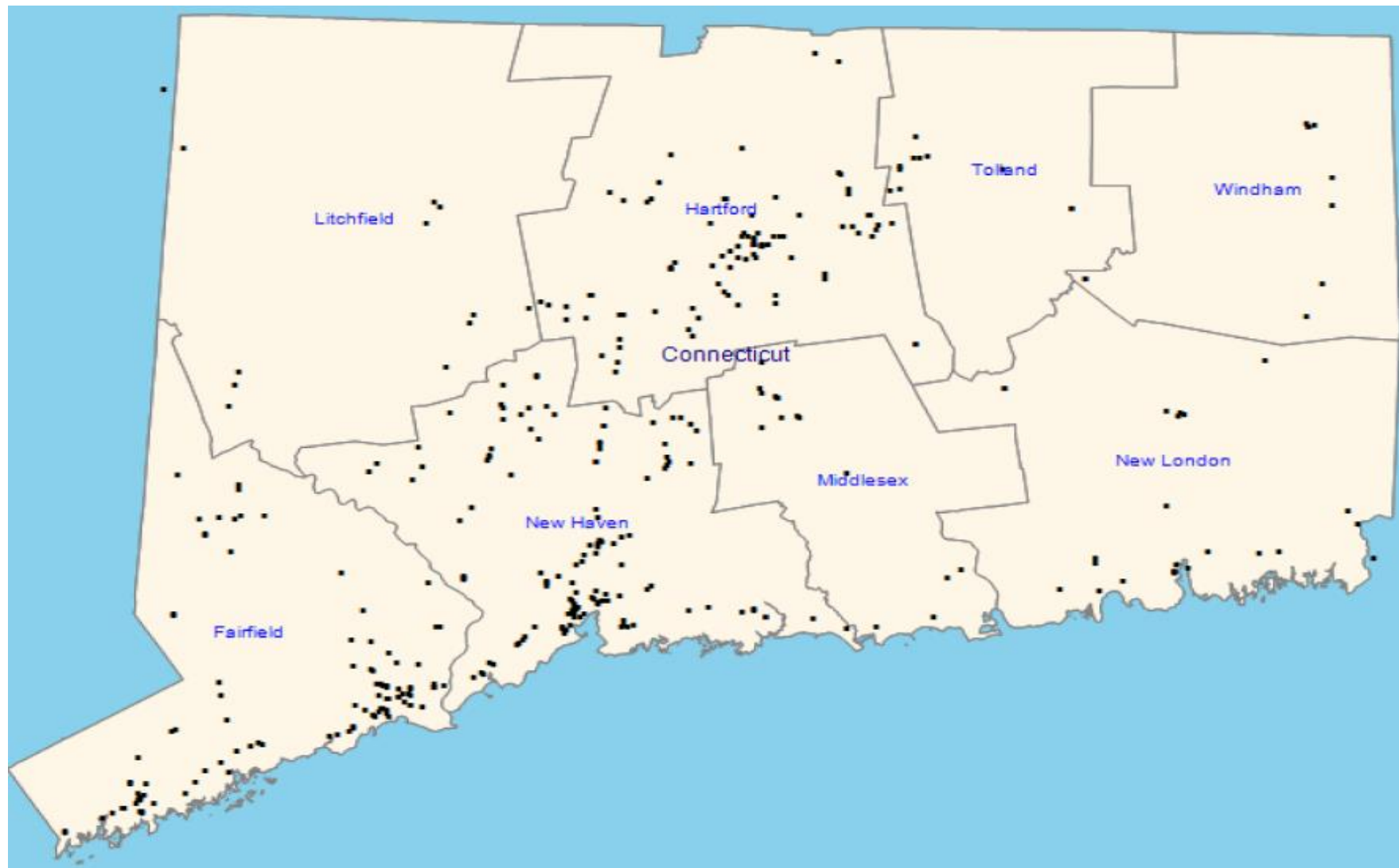
PCMH Practice Site Locations

All PCMH Program Practice Site Locations



Note: Data is as of December 31, 2021 – Maps are updated quarterly.

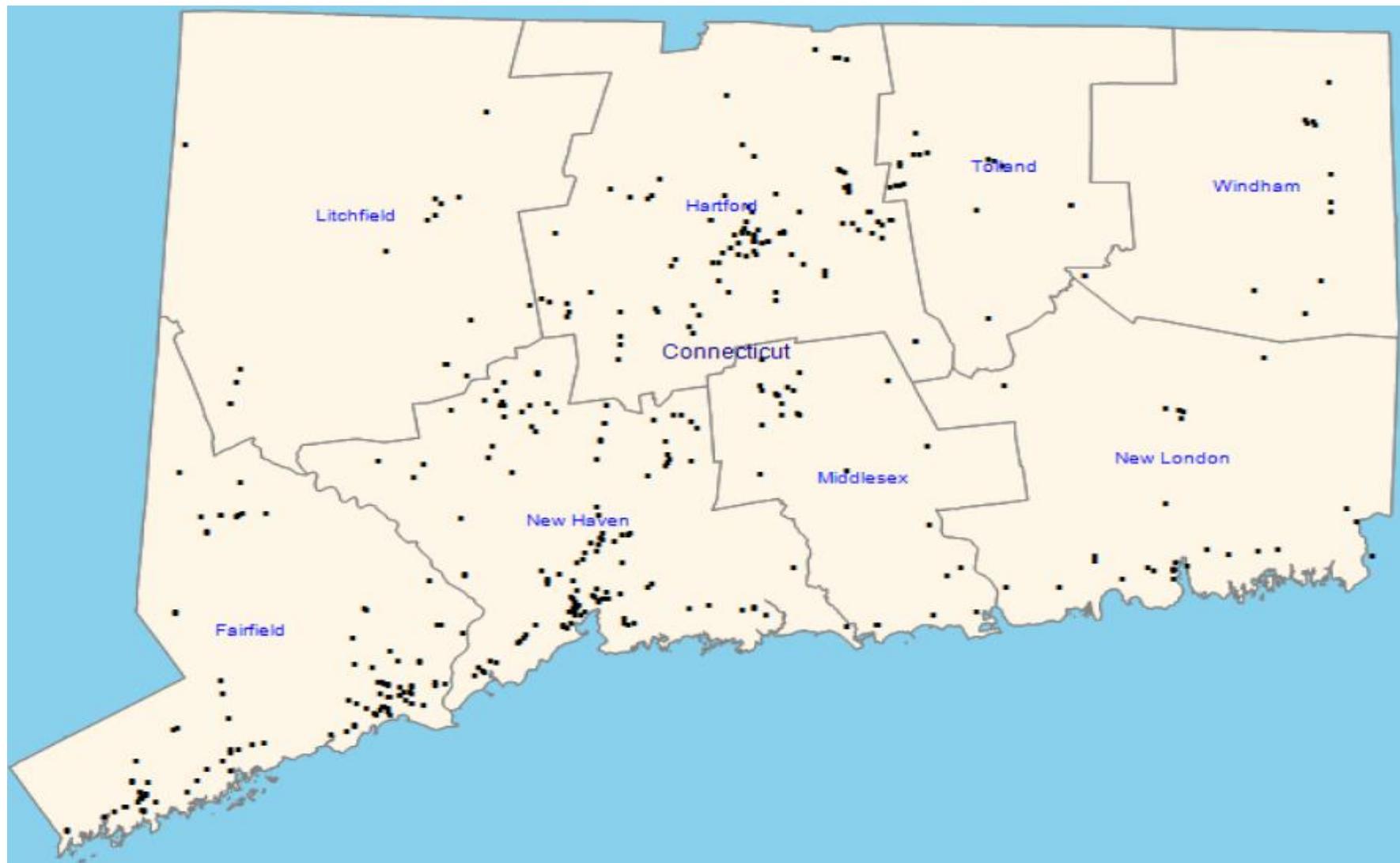
Internal Medicine PCMH Program Practice Site Locations



Note: Data is as of December 31, 2021 – Maps are updated quarterly.

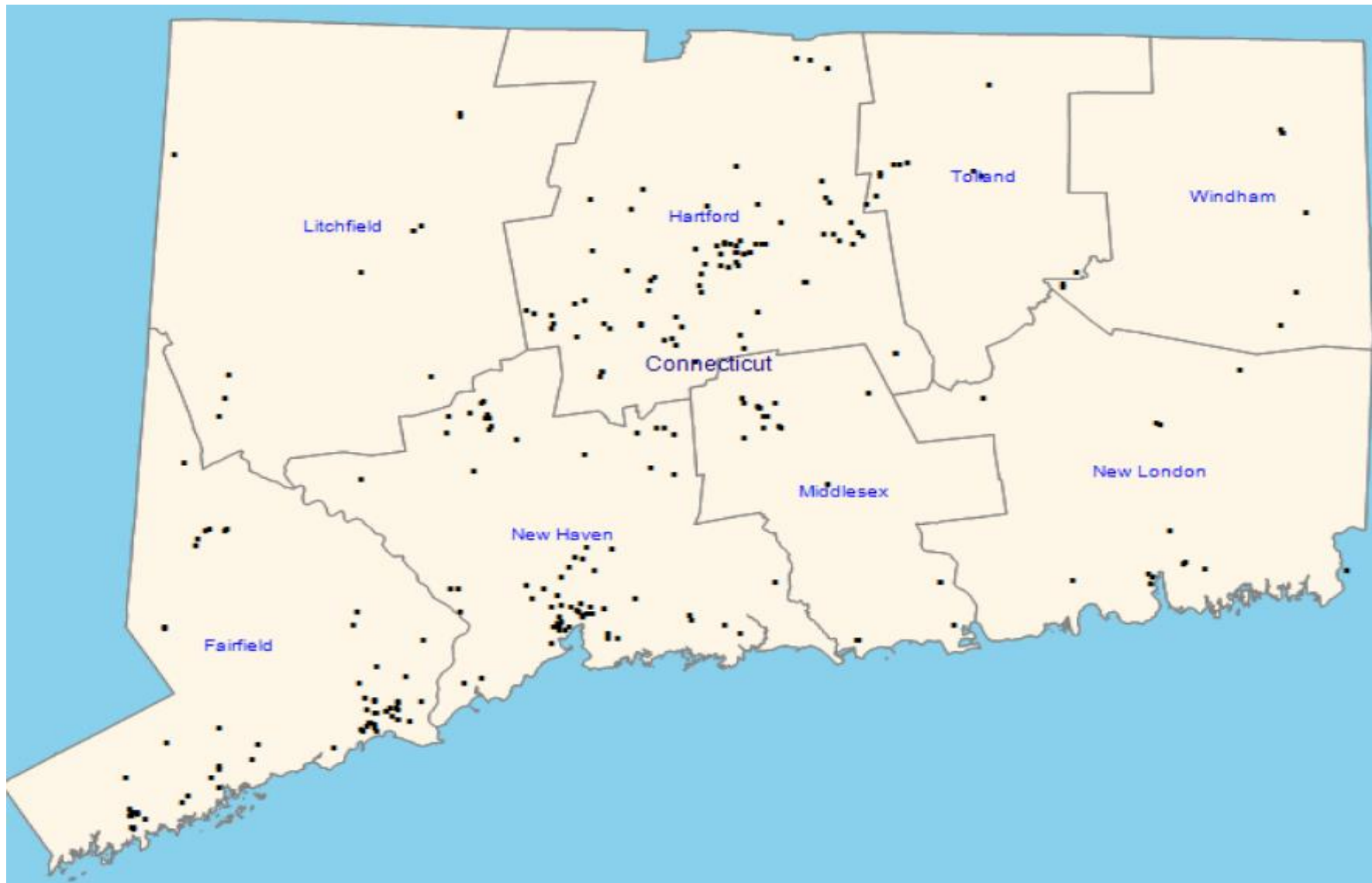
Family Practice PCMH Program

Practice Site Locations



Note: Data is as of December 31, 2021 – Maps are updated quarterly.

Pediatric PCMH Program Practice Site Locations



Note: Data is as of December 31, 2021 – Maps are updated quarterly.